

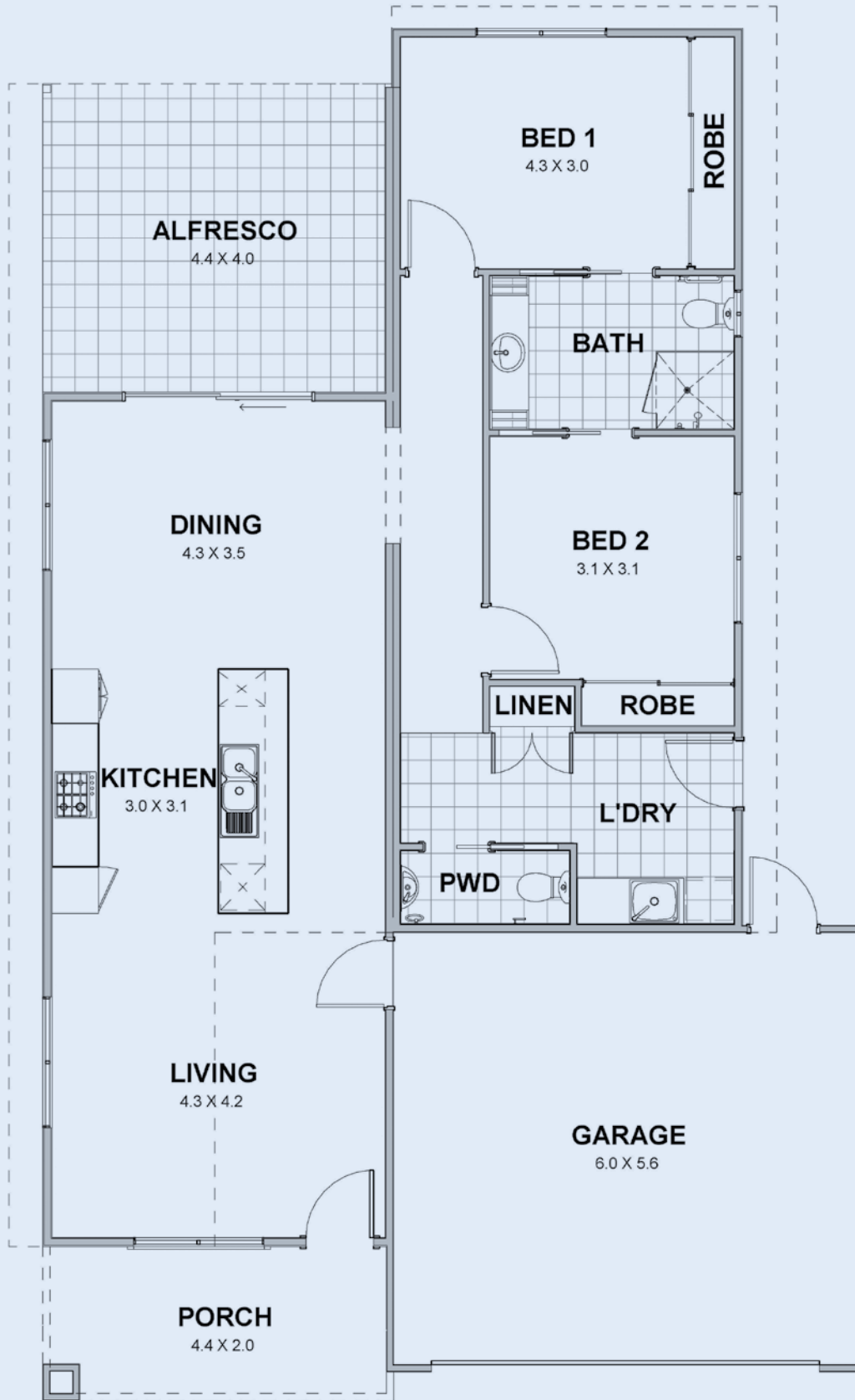


Whitecap

from \$249,000

2 1 2

- Two bedrooms, one bathroom, two toilets, double garage
- 166m² of total living area, including garage, porch and alfresco area
- Main living area is tiled with carpets in bedrooms
- Roof and external walls fully insulated
- Stainless steel electric oven, gas cook top and range hood
- Energy efficient gas hot water system
- Solid core front and laundry doors with Gainsborough entry lock set including deadlocks
- Jason Windows aluminium windows and sliding doors with keylocks and flyscreens
- Garage with remote sectional garage door
- Standard 2,425mm height plasterboard ceilings with classic cornices
- Landscaping & reticulation to front
- Fencing 1,800mm high Colorbond
- Industry best 10-year structural guarantee
- Tiling to alfresco is an upgrade (as illustrated on plan overleaf)



The home as displayed inclusive of price, is current as of May 2019 and is subject to change without notice.
 If you have any sales enquires please email enquiries@juriembayvillage.com.au or call 0447 253 440.