

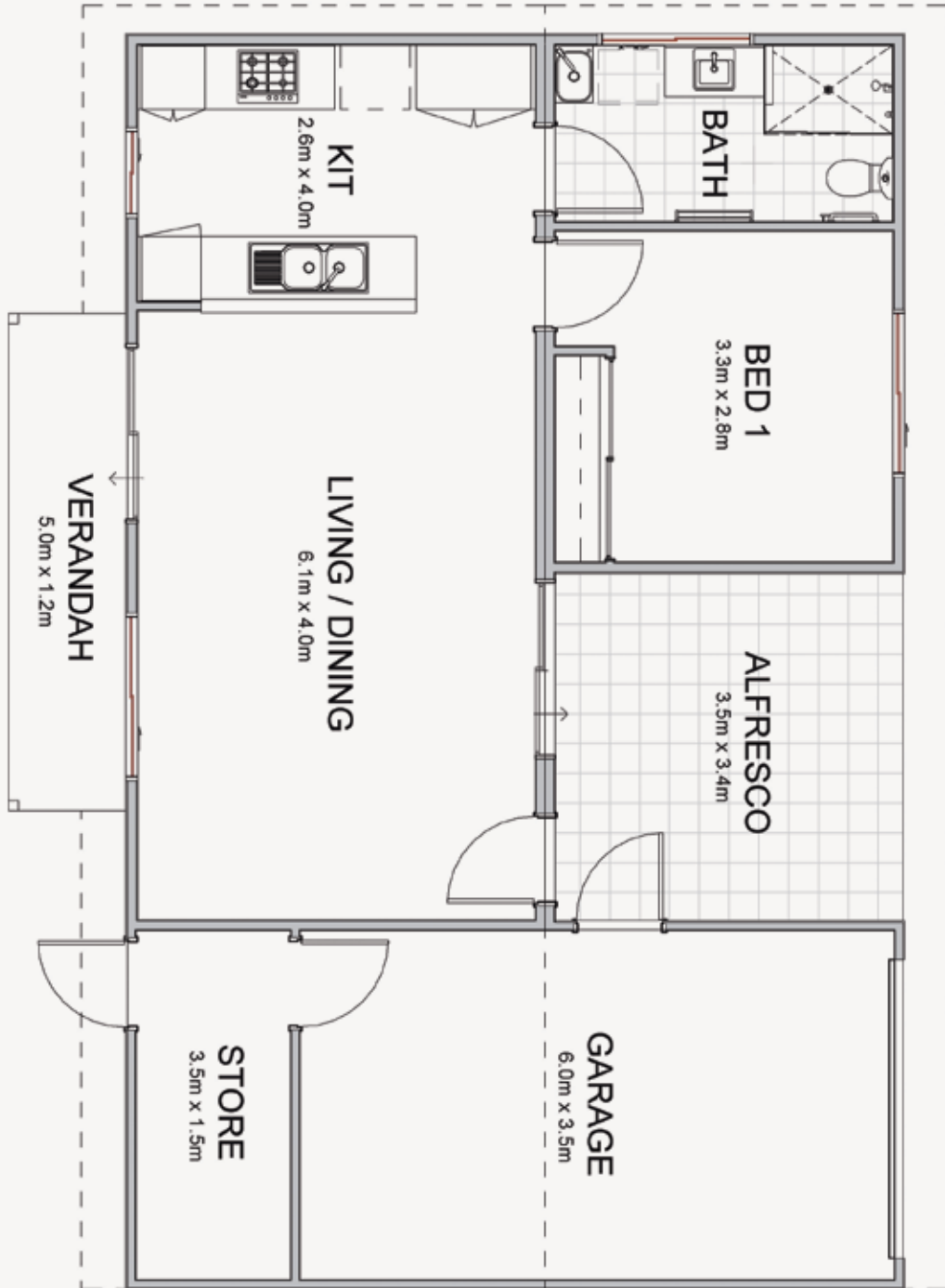


Seashell

from \$205,000



- One bedroom, one bathroom, one toilet, single garage
- 104m² of total living area, including garage, storeroom, porch and alfresco area
- Main living area is tiled, with carpet in bedroom
- Roof and external walls fully insulated
- Stainless steel electric oven, gas cooktop with range hood
- Energy efficient gas hot water system
- Solid core front and laundry doors with Gainsborough entry lock set including deadlocks
- Jason Windows aluminium windows and sliding doors with keylocks and flyscreens
- Garage with remote sectional garage door
- Lockup storeroom under main roof
- Standard 2,425mm height plasterboard ceilings with classic cornices
- Landscaping and reticulation to the front
- Fencing 1,800mm high Colorbond
- Industry best 10-year structural guarantee



The home as displayed inclusive of price, is current as of May 2019 and is subject to change without notice.
 If you have any sales enquires please email enquiries@juriembayvillage.com.au or call 0447 253 440.