

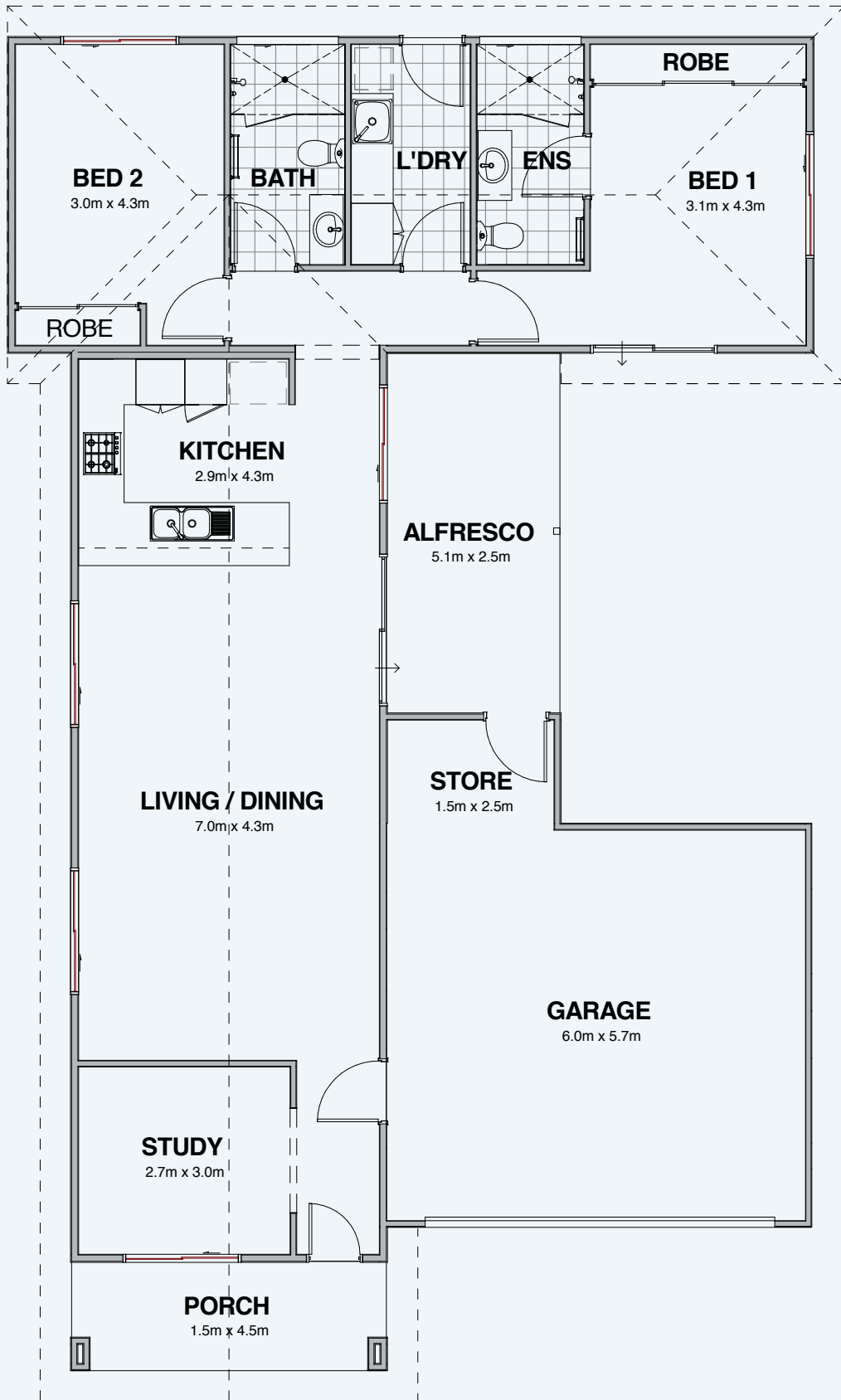


## Breakwater

from \$262,000



- Two bedrooms, two bathrooms, two toilets, one study, double garage
- 169m<sup>2</sup> of total living area, including double garage, porch and alfresco area
- Main living area is tiled with carpets in bedrooms
- Roof and external walls fully insulated
- Stainless steel electric oven, hot plate and range hood
- Energy efficient gas hot water system
- Solid core front and laundry doors with Gainsborough entry lock set including deadlocks
- Jason Windows aluminium windows and sliding doors with keylocks and flyscreens
- Garage with remote sectional garage door
- Standard 2,425mm height plasterboard ceilings with classic cornices
- Landscaping & reticulation to front
- Fencing 1,800mm high Colorbond
- Industry best 10-year structural guarantee



The home as displayed inclusive of price, is current as of May 2019 and is subject to change without notice.  
If you have any sales enquires please email [enquiries@juriembayvillage.com.au](mailto:enquiries@juriembayvillage.com.au) or call 0447 253 440.