

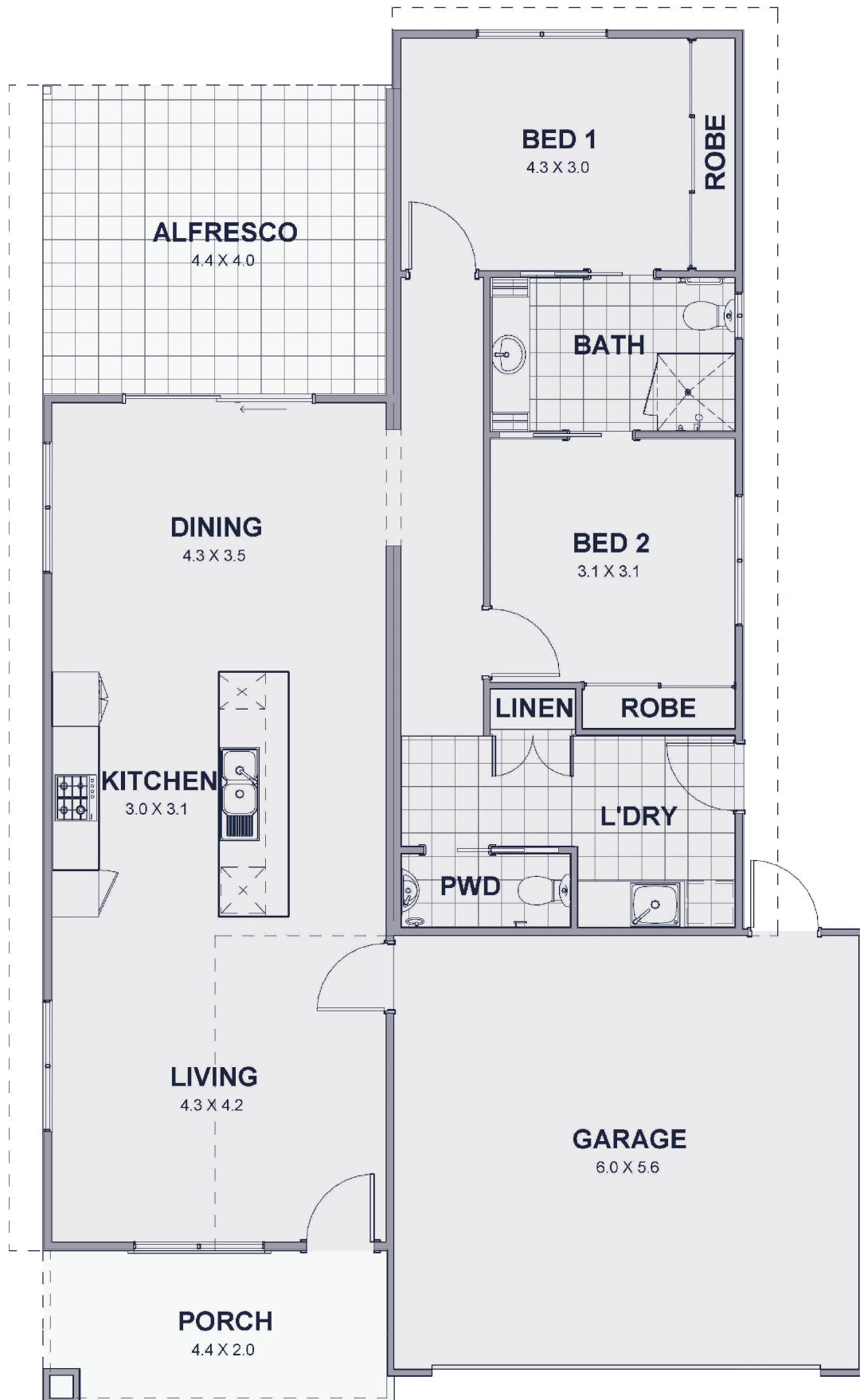


## Whitecap



- Two bedrooms, one bathroom, two toilets, double garage
- 166m<sup>2</sup> of total living area, including garage, porch and alfresco area
- Main living area is tiled with carpets in bedrooms
- Roof and external walls fully insulated
- Stainless steel electric oven, gas cook top and range hood
- Energy efficient gas hot water system
- Solid core front and laundry doors with Gainsborough entry lock set including deadlocks
- Jason Windows aluminium windows and sliding doors with keylocks and flyscreens
- Garage with remote sectional garage door
- Standard 2,425mm height plasterboard ceilings with classic cornices
- Landscaping & reticulation to front
- Fencing 1,800mm high Colorbond
- Industry best 10-year structural guarantee
- Tiling to alfresco is an upgrade (as illustrated on plan overleaf)

# Whitecap



Plan shown is for marketing purposes only. All dimensions are approximate and not to scale. Interested parties should make their own enquiries. If you have any sales enquiries please call 0409 207 815.