

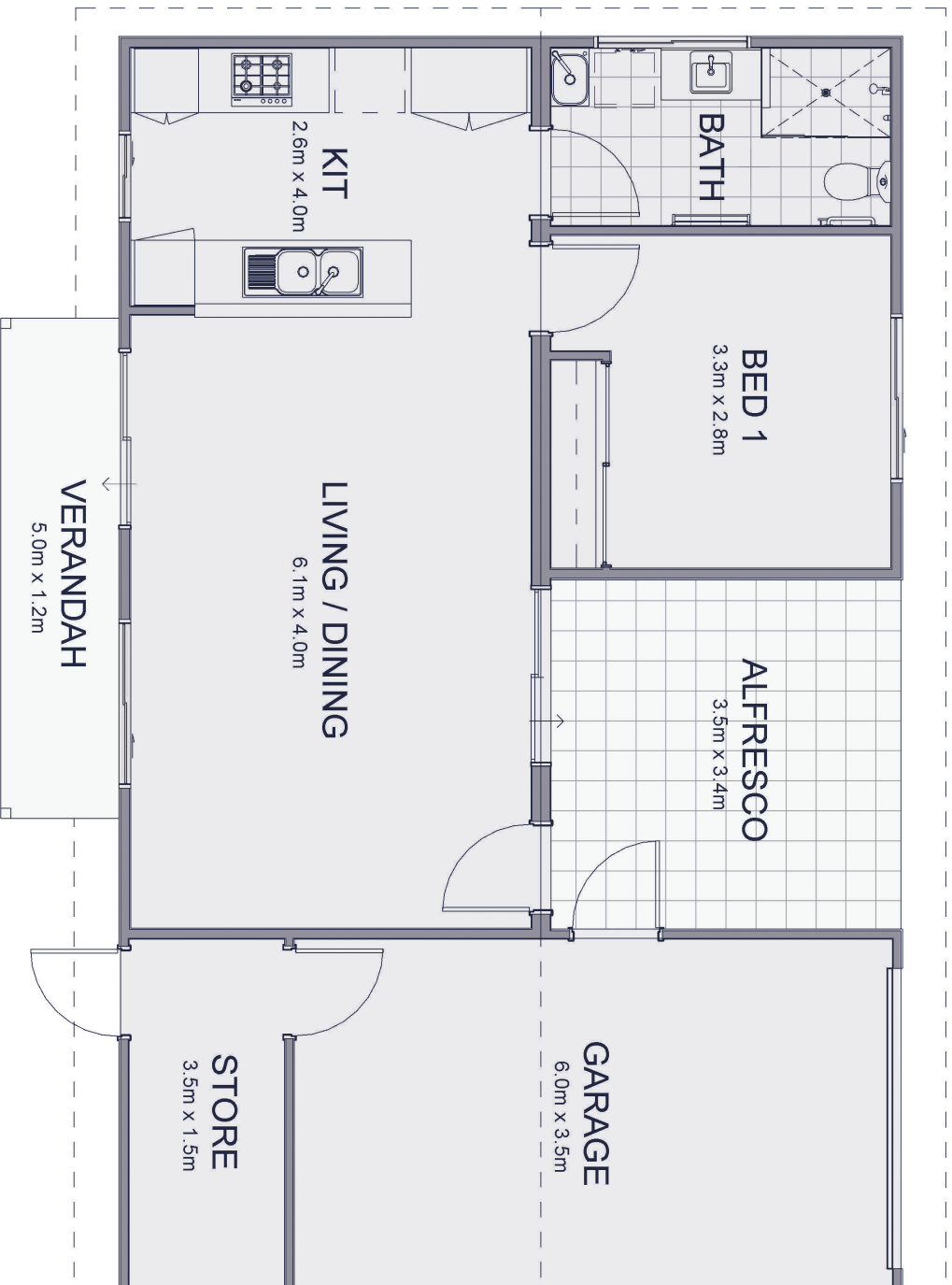


Seashell



- One bedroom, one bathroom, one toilet, single garage
- 104m² of total living area, including garage, storeroom, porch and alfresco area
- Main living area is tiled, with carpet in bedroom
- Roof and external walls fully insulated
- Stainless steel electric oven, gas cooktop with range hood
- Energy efficient gas hot water system
- Solid core front and laundry doors with Gainsborough entry lock set including deadlocks
- Jason Windows aluminium windows and sliding doors with keylocks and flyscreens
- Garage with remote sectional garage door
- Lockup storeroom under main roof
- Standard 2,425mm height plasterboard ceilings with classic cornices
- Landscaping and reticulation to the front
- Fencing 1,800mm high Colorbond
- Industry best 10-year structural guarantee

Seashell



Plan shown is for marketing purposes only. All dimensions are approximate and not to scale. Interested parties should make their own enquiries. If you have any sales enquiries please call 0409 207 815.