



**Coral  
Estate**



# Coral Estate offers everything you need

*Conveniently located in the thriving coastal town of Mandurah, which is one of Western Australia's favourite holiday destinations.*

Coral Estate is close to Pinjarra Road and the Mandurah Bypass, providing easy access to the local facilities and transport routes to Perth and Bunbury.

Within minutes of Coral Estate, you'll find the best that Mandurah has to offer, including Centro Shopping Centre, Mandurah Aquatic and Recreation Centre, medical facilities and all the waterside cafés, restaurants and shops.

The convenient central location of Coral Estate makes it the ideal, safe and secure location to take full advantage of the vast array of surrounding community amenities and sporting clubs.

## **Outstanding security and amenities**

At Coral Estate, your security and peace of mind are our concern. That's why every unit features:

- *Emergency call system.*
- *24-hour monitoring.*
- *Smoke detector.*
- *Security locks to all opening windows.*
- *Security doors.*
- *Wheelchair-friendly design.*

To enable you to stay in your home longer, Acacia Living offers personal care via home care services. Further details can be provided by our Home Care Manager located at our Meadow Springs Residential Care Facility upon request.

Residents can also take advantage of the Community Centre which includes:

- *Auditorium.*
- *Library.*
- *Games room.*
- *Kitchen.*
- *Covered BBQ and patio area.*



## High-quality retirement village living

*At Acacia Living, we're committed to providing high-quality retirement village living in a range of residential and community settings.*

Coral Estate caters for a broad spectrum of retirement village living options and we adhere strongly to the following values:

- *We believe in maintaining a caring community offering a wide range of services.*
- *We listen to residents within the village and strive to satisfy their needs.*
- *We strive to achieve industry best practice and perform a market-leader role in every area of endeavour.*
- *We maintain that everything we do should be achieved by utilising resources efficiently with the help of the most highly skilled employees and volunteers we can attract.*
- *We believe in the importance of encouraging a genuine sense of community.*

Access and equity are hallmarks of our approach to operating Coral Estate and all our policies and activities are transparent to ensure the village management team is totally accountable at all times.

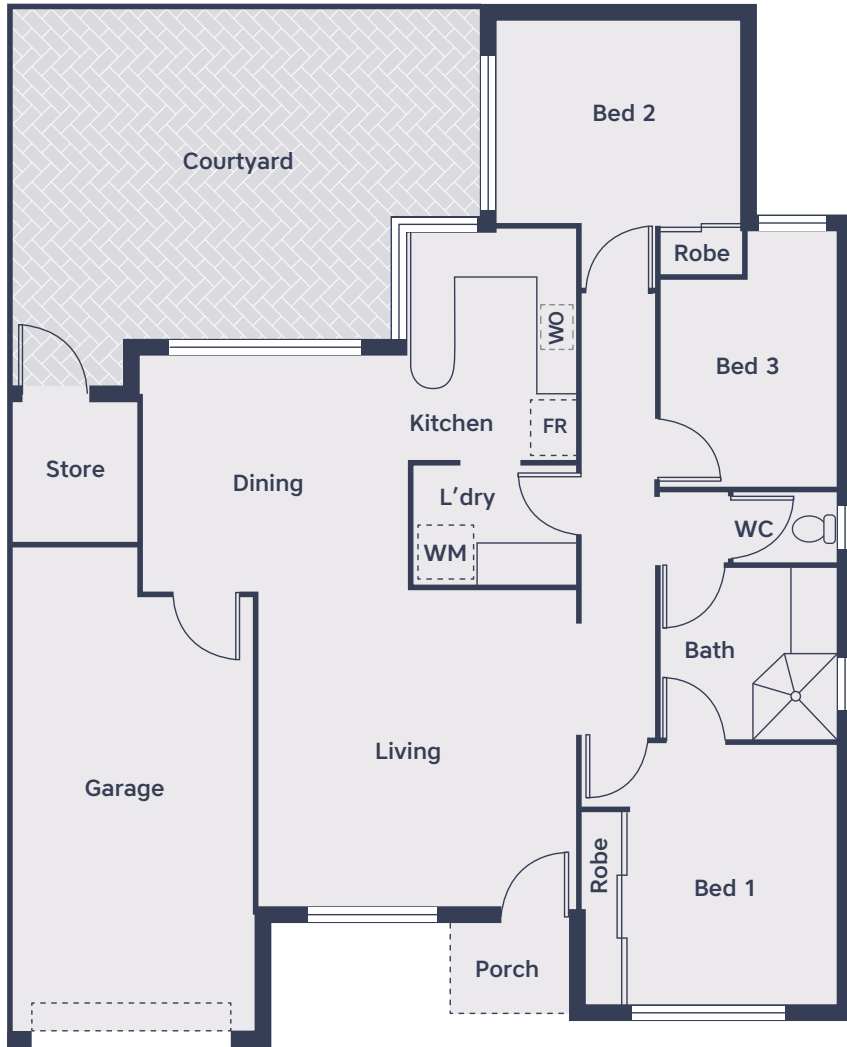




## Coral Estate units

The units at Coral Estate combine modern design with the following features:

- Reverse-cycle, split-system air conditioning.
- Roof insulation for year round comfort.
- Gas bayonet for winter warmth.
- Economical gas hot water.
- TV and telephone outlets.
- Built-in robes in two bedrooms.
- Floor coverings throughout (tiles and carpet).
- Window treatments (verticals).
- Electric wall oven.
- Gas cook top.
- Ceiling heat lamp in bathroom.
- Kitchen exhaust fan.
- Lots of storage space including kitchen pantry, linen press and store room.
- Generous single garage with remote controlled door and direct access to the villa.
- Paved patio area.
- Folding clothes line.
- Landscaping and reticulation.

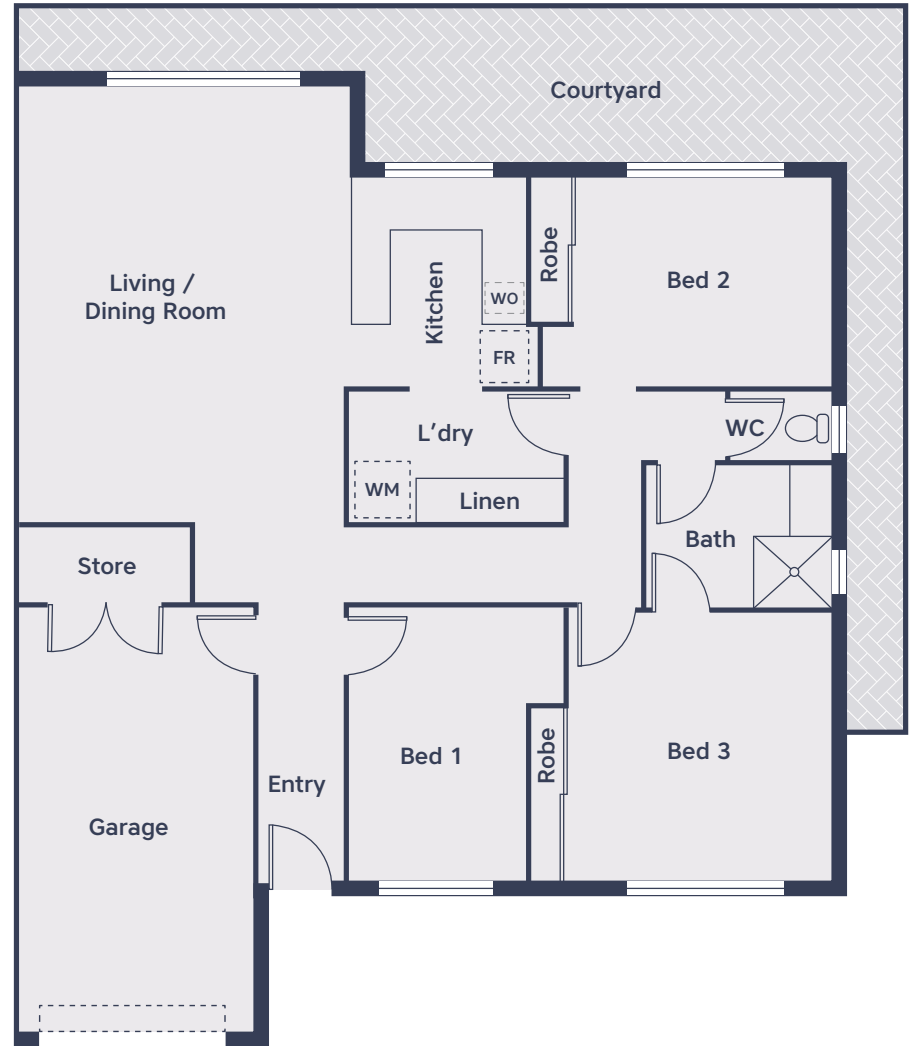


**Unit Type A**

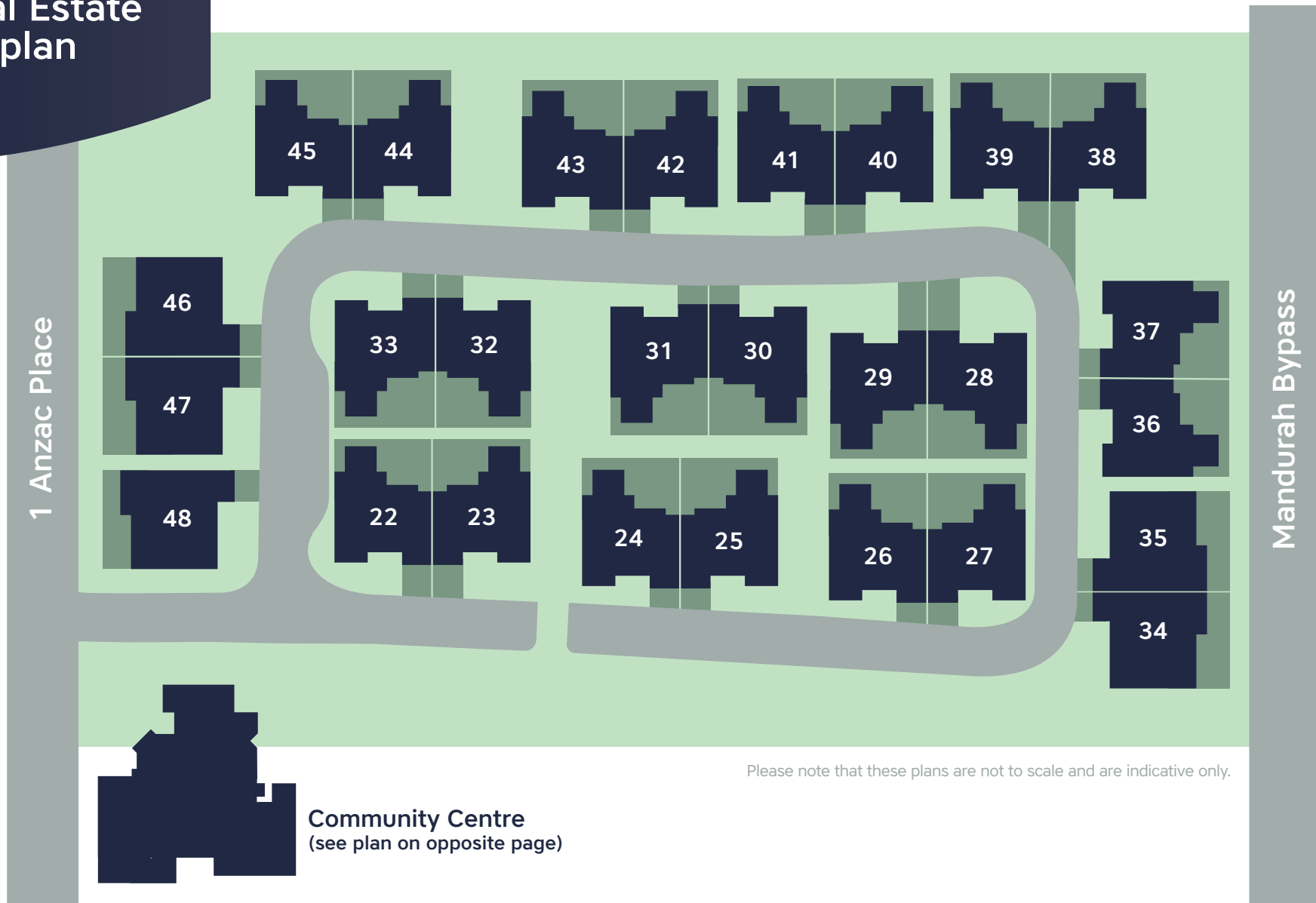
22-27, 30, 31, 36-45

**Unit Type B**

28, 29, 32-35, 46, 47, 48

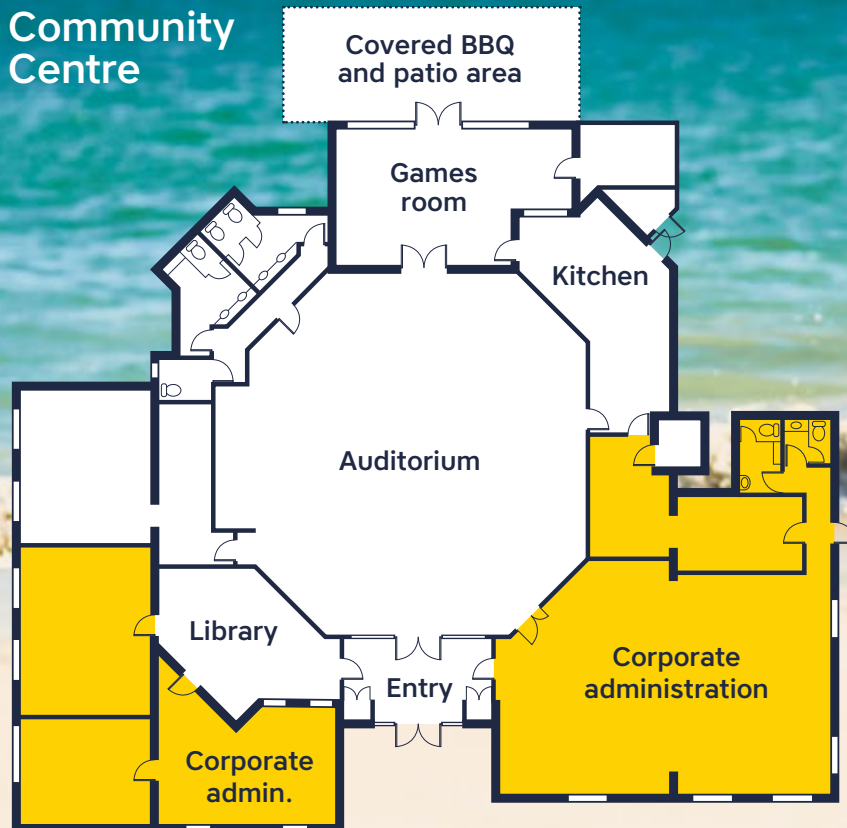


# Coral Estate site plan



Please note that these plans are not to scale and are indicative only.

## Community Centre



Note: Shaded areas are utilised for Corporate Administration and are not available for resident use.



**Acacia Living – Coral Estate**

22 Third Avenue,  
Mandurah WA 6210

**Phone** (08) 9535 0290

**Mobile** 0490 298 343

**Email** [mgrmandurah@acacialiving.com.au](mailto:mgrmandurah@acacialiving.com.au)

[acacialiving.com.au](http://acacialiving.com.au)

